

Safety instructions**Intended use**

The sight glass to be built into pipe conduits to allow the inspection of liquids.

General notes**NOTICE - observe the operating instructions**

To avoid danger and damage, the fitting must be used in accordance with the safety instructions and technical data contained in the operating instructions.

**NOTICE**

All data are in line with the current state of development. Subject to change as a result of technical progress.

General safety instructions**⚠ WARNING****Risk of injury by outflowing medium**

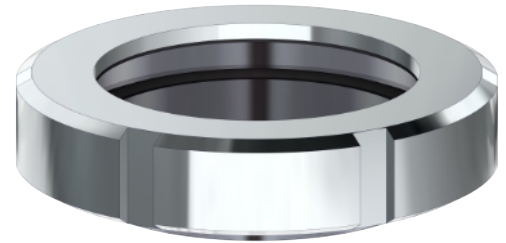
Dismantling the valve or valve assemblies from the plant can cause injuries.

- Media flowing through the leakage drain outlet are to be drained off without splashing into a discharge arrangement.
- Carry the disassembling only if when the plant has been rendered pressure-less and free of liquid and gas.

**⚠ WARNING****Danger of injury due exceeding the operating pressure**

If the maximum permissible working pressure is exceeded, accident hazard due to bursting of the glass cylinder or discharge of liquids into the atmosphere is possible.

- In order to avoid excess pressure install over-pressure protections.
- The fitting position has to be chosen in such a way as to exclude danger of accident. In order to prevent accident hazards, provide appropriate protective devices.

Product image**Function and operation****Installation instructions**

External forces due to the installation must always be avoided.

Fitting position

- The installation position is without importance.

Cleaning

Optimum cleaning is achieved with pipeline cleaning.

General welding guidelines

Sealing elements integrated in weld components must generally be removed prior to welding. To prevent damage, welding should be undertaken by certified personnel (EN ISO 9606-1). Use the TIG (Tungsten Inert Gas) welding process.

**⚠ CAUTION****Damage and injuries due to high temperature supply**

To avoid a distortion of the components, all welding parts must be welded to stress-relieved.

Allow all components to cool before assembling.

**NOTICE****Damage due to impurities**

Impurities can cause damage to the seals and seals area.

Clean inside areas prior to assembly.

Translation of the original

Technical data

Model	Sight glass Type: 7022 (Borosilicate glass)
Size	DN25 - DN150
Connection type	Weld-on end DIN EN 10357

Temperature range	
Ambient	+4° to +45°C (air)
Operation	+0° to +95°C (medium dependent)
Sterilization	EPDM +140°C
	HNBR +100°C
	NBR +100°C
	FKM +100°C
	VMQ +100°C

Materials in product contact	
stainless steel	1.4301 / AISI 304 1.4404 / AISI 316L
Surface	Ra ≤ 0,8µm
Sight glass	• Borosilicate glass

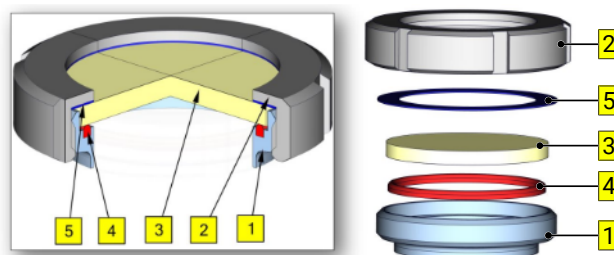
Nominal pressure [PN]

DN	25	32	40	50	65	80	100	125	150
Zoll	1	1¼	1½	2	2½	3	4	5	6
[PN]	40	30	25	15	8	10	8	8	5

Disassembly and assembly

- Disassembly**
- Unscrew the slotted nut (2).
 - Remove the glass (3), sealing ring (4) and slide ring (5) from the fitting (1).

- Assembly**
- Assemble in reverse order.



1 welding male union	2 Slotted nut
3 Glass	4 seal ring
5 sliding ring	

Lubricant recommendation

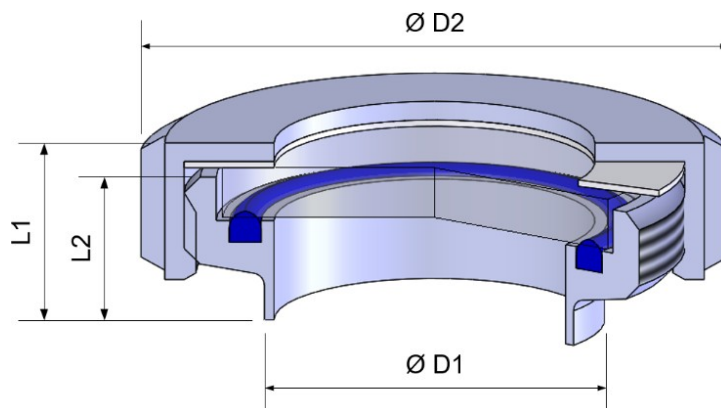
i	EPDM; HNBR; NBR; FKM; k-flex	- Klüber Paraliq GTE703*
	Silicone	- Klüber Sintheso pro AA2*
	Thread	- Interflon Food*
*) It is only permitted to use approved lubricants, if the respective fitting is used for the production of food or drink. Please observe the relevant safety data sheets of the manufacturers of lubricants.		

All data are in line with the current state of development. Subject to change as a result of technical progress.

Translation of the original

Drawings and dimensions

Nominal size	Dimensions [mm]				
	Ø D1	Ø D2	L1	L2	Thread
DN 25	29 x 1,5	63	30	22	Rd 52 x 1/6
DN 32	35 x 1.5	70	28	22	Rd 58 x 1/6
DN 40	41 x 1,5	78	30	22	Rd 65 x 1/6
DN 50	53 x 1,5	92	29	23	Rd 78 x 1/6
DN 65	70 x 2,0	112	35	25	Rd 95 x 1/6
DN 80	85 x 2,0	127	33	26	Rd 110 x 1/4
DN 100	104 x 2,0	148	38	30	Rd 130 x 1/4
DN 125	129 x 2,0	178	56	46	Rd 160 x 1/4
DN 150	154 x 2,0	210	60	50	Rd 190 x 1/4



All data are in line with the current state of development. Subject to change as a result of technical progress.

Translation of the original

Wearing parts

Nominal size	Material	Sight glass	Glass (3)	Slide ring (5)
		complete	[Borosilicate]	PTFE
DN 25	1.4307	7022 025 xxx-021	7026025000-073	8040052026-053
	1.4404	7022 025 xxx-041		
DN 32	1.4307	7022 032 xxx-021	7026032000-073	8040065038-053
	1.4404	7022 032 xxx-041		
DN 40	1.4307	7022 040 xxx-021	7026040010-073	8040065038-053
	1.4404	7022 040 xxx-041		
DN 50	1.4307	7022 050 xxx-021	7026050000-073	8040078050-053
	1.4404	7022 050 xxx-041		
DN 65	1.4307	7022 065 xxx-021	7026065040-073	8040095066-053
	1.4404	7022 065 xxx-041		
DN 80	1.4307	7022 080 xxx-021	7026000070-073	8040110081-053
	1.4404	7022 080 xxx-041		
DN 100	1.4307	7022 100 xxx-021	7026100000-073	8040130100-053
	1.4404	7022 100 xxx-041		
DN 125	1.4307	7022 125 xxx-021	7026125000-073	8040160125-053
	1.4404	7022 125 xxx-041		
DN 150	1.4307	7022 150 xxx-021	7026150000-073	8040190150-053
	1.4404	7022 150 xxx-041		

All data are in line with the current state of development. Subject to change as a result of technical progress.

Nominal size	Seal (4)				
	NBR	HNBR	EPDM	FKM	VMQ
DN 25	2004025000-056	2004025000-050	2004025000-054	2004025000-051	2004025000-052
DN 32	2004032000-056	2004032000-050	2004032000-054	2004032000-051	2004032000-052
DN 40	2004040000-056	2004040000-050	2004040000-054	2004040000-051	2004040000-052
DN 50	2004050000-056	2004050000-050	2004050000-054	2004050000-051	2004050000-052
DN 65	2004065000-056	2004065000-050	2004065000-054	2004065000-051	2004065000-052
DN 80	2004080000-056	2004080000-050	2004080000-054	2004080000-051	2004080000-052
DN 100	2004100000-056	2004100000-050	2004100000-054	2004100000-051	2004100000-052
DN 125	2004125000-056	2004125000-050	2004125000-054	2004125000-051	2004125000-052
DN 150	2004150000-056	2004150000-050	2004150000-054	2004150000-051	2004150000-052