

Safety instructions**Intended use**

The sight glass to be built into pipe conduits to allow the inspection of liquids.

General notes**NOTICE - observe the operating instructions**

To avoid danger and damage, the fitting must be used in accordance with the safety instructions and technical data contained in the operating instructions.

**NOTICE**

All data are in line with the current state of development. Subject to change as a result of technical progress.

General safety instructions**WARNING****Risk of injury by outflowing medium**

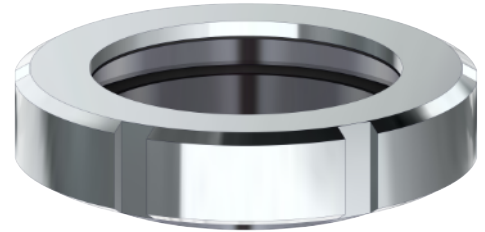
Dismantling the valve or valve assemblies from the plant can cause injuries.

- Media flowing through the leakage drain outlet are to be drained off without splashing into a discharge arrangement.
- Carry the disassembling only if when the plant has been rendered pressure-less and free of liquid and gas.

**WARNING****Danger of injury due exceeding the operating pressure**

If the maximum permissible working pressure is exceeded, accident hazard due to bursting of the glass cylinder or discharge of liquids into the atmosphere is possible.

- In order to avoid excess pressure install overpressure protections.
- The fitting position has to be chosen in such a way as to exclude danger of accident. In order to prevent accident hazards, provide appropriate protective devices.

Product image**Function and operation****Installation instructions**

External forces due to the installation must always be avoided.

Fitting position

- The installation position is without importance.

Cleaning

Optimum cleaning is achieved with pipeline cleaning.

General welding guidelines

Sealing elements integrated in weld components must generally be removed prior to welding. To prevent damage, welding should be undertaken by certified personnel (EN ISO 9606-1). Use the TIG (Tungsten Inert Gas) welding process.

**CAUTION****Damage and injuries due to high temperature supply**

To avoid a distortion of the components, all welding parts must be welded to stress-relieved.

Allow all components to cool before assembling.

**NOTICE****Damage due to impurities**

Impurities can cause damage to the seals and seals area.

Clean inside areas prior to assembly.

Translation of the original

Technical data

Model	Sight glass Type: 7001 (Soda-lime glass)
Size	DN25 - DN150
Connection type	Weld-on end DIN EN 10357

Temperature range

Ambient	+4° to +45°C (air)
Operation	+0° to +100°C (medium dependent)
Sterilization	EPDM +140°C
	HNBR +100°C
	NBR +100°C
	FKM +100°C
	VMQ +100°C

Materials in product contact

stainless steel	1.4301 / AISI 304 1.4404 / AISI 316L
Surface	Ra ≤ 0,8µm
Sight glass	• Soda-lime glass

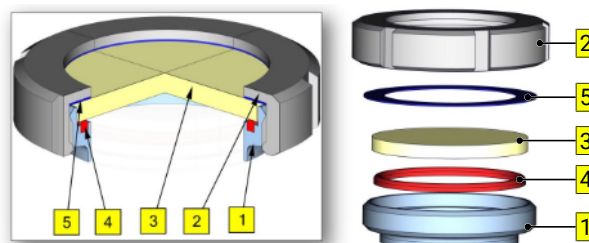
Disassembly and assembly

Disassembly

- Unscrew the slotted nut (2).
- Remove the glass (3), sealing ring (4) and slide ring (5) from the fitting (1).

Assembly

- Assemble in reverse order.



- | | |
|----------------------|---------------|
| 1 welding male union | 2 Slotted nut |
| 3 Glass | 4 Seal ring |
| 5 sliding ring | |

Lubricant recommendation

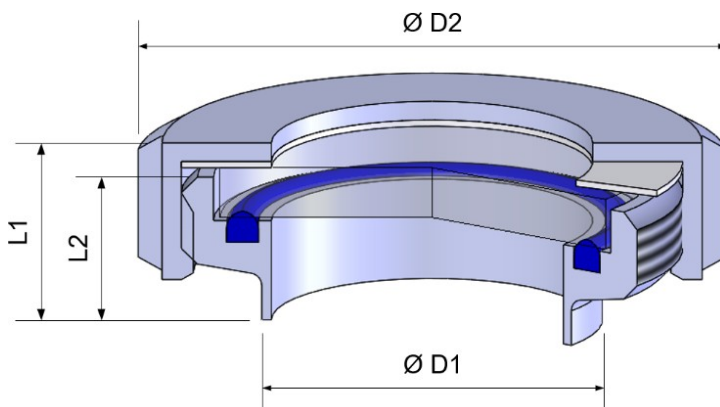
	EPDM; HNBR; NBR; FKM; k-flex	- Klüber Paraliq GTE703*
	Silicone	- Klüber Sintheso pro AA2*
	Thread	- Interflon Food*
*) It is only permitted to use approved lubricants, if the respective fitting is used for the production of food or drink. Please observe the relevant safety data sheets of the manufacturers of lubricants.		

All data are in line with the current state of development. Subject to change as a result of technical progress.

Translation of the original

Drawings and dimensions

Nominal size	Dimensions [mm]				
	Ø D1	Ø D2	L1	L2	Thread
DN 25	29 x 1,5	63	30	22	Rd 52 x 1/6
DN 32	35 x 1.5	70	28	22	Rd 58 x 1/6
DN 40	41 x 1,5	78	30	22	Rd 65 x 1/6
DN 50	53 x 1,5	92	29	23	Rd 78 x 1/6
DN 65	70 x 2,0	112	35	25	Rd 95 x 1/6
DN 80	85 x 2,0	127	33	26	Rd 110 x 1/4
DN 100	104 x 2,0	148	38	30	Rd 130 x 1/4
DN 125	129 x 2,0	178	56	46	Rd 160 x 1/4
DN 150	154 x 2,0	210	60	50	Rd 190 x 1/4



All data are in line with the current state of development. Subject to change as a result of technical progress.

Translation of the original

Wearing parts

Nominal size	Material	Sight glass	Glass (3)	Slide ring (5)
		complete	Soda-lime glass	PTFE
DN 25	1.4307	7001 025 xxx-021	7002025000-072	8040052026-053
	1.4404	7001 025 xxx-041	[25 bar]	
DN 32	1.4307	7001 032 xxx-021	7002032000-072	8040065038-053
	1.4404	7001 032 xxx-041	[20 bar]	
DN 40	1.4307	7001 040 xxx-021	7002040000-072	8040065038-053
	1.4404	7001 040 xxx-041	[16 bar]	
DN 50	1.4307	7001 050 xxx-021	7002050000-072	8040078050-053
	1.4404	7001 050 xxx-041	[10 bar]	
DN 65	1.4307	7001 065 xxx-021	7002065000-072	8040095066-053
	1.4404	7001 065 xxx-041	[10 bar]	
DN 80	1.4307	7001 080 xxx-021	7002080000-072	8040110081-053
	1.4404	7001 080 xxx-041	[7 bar]	
DN 100	1.4307	7001 100 xxx-021	7002100000-072	8040130100-053
	1.4404	7001 100 xxx-041	[7 bar]	
DN 125	1.4307	7001 125 xxx-021	7002125000-072	8040160125-053
	1.4404	7001 125 xxx-041	[7 bar]	
DN 150	1.4307	7001 150 xxx-021	7002150000-072	8040190150-053
	1.4404	7001 150 xxx-041	[5 bar]	

Nominal size	Seal (4)				
	EPDM	HNBR	NBR	FKM	VMQ
DN 25	2005025000-054	2004025000-050	2004025000-056	2008025000-051	2007025000-052
DN 32	2005032000-054	2004032000-050	2004032000-056	2008032000-051	2007032000-052
DN 40	2005040000-054	2004040000-050	2004040000-056	2008040000-051	2007040000-052
DN 50	2005050000-054	2004050000-050	2004050000-056	2008050000-051	2007050000-052
DN 65	2005065000-054	2004065000-050	2004065000-056	2008065000-051	2007065000-052
DN 80	2005080000-054	2004080000-050	2004080000-056	2008080000-051	2007080000-052
DN 100	2005100000-054	2004100000-050	2004100000-056	2008100000-051	2007100000-052
DN 125	2005125000-054	2004125000-050	2004125000-056	2008125000-051	2007125000-052
DN 150	2005150000-054	2004150000-050	2004150000-056	2008150000-051	2007150000-052

All data are in line with the current state of development. Subject to change as a result of technical progress.